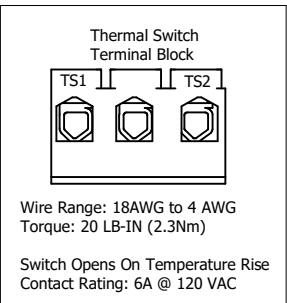
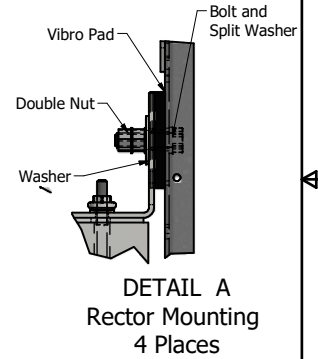
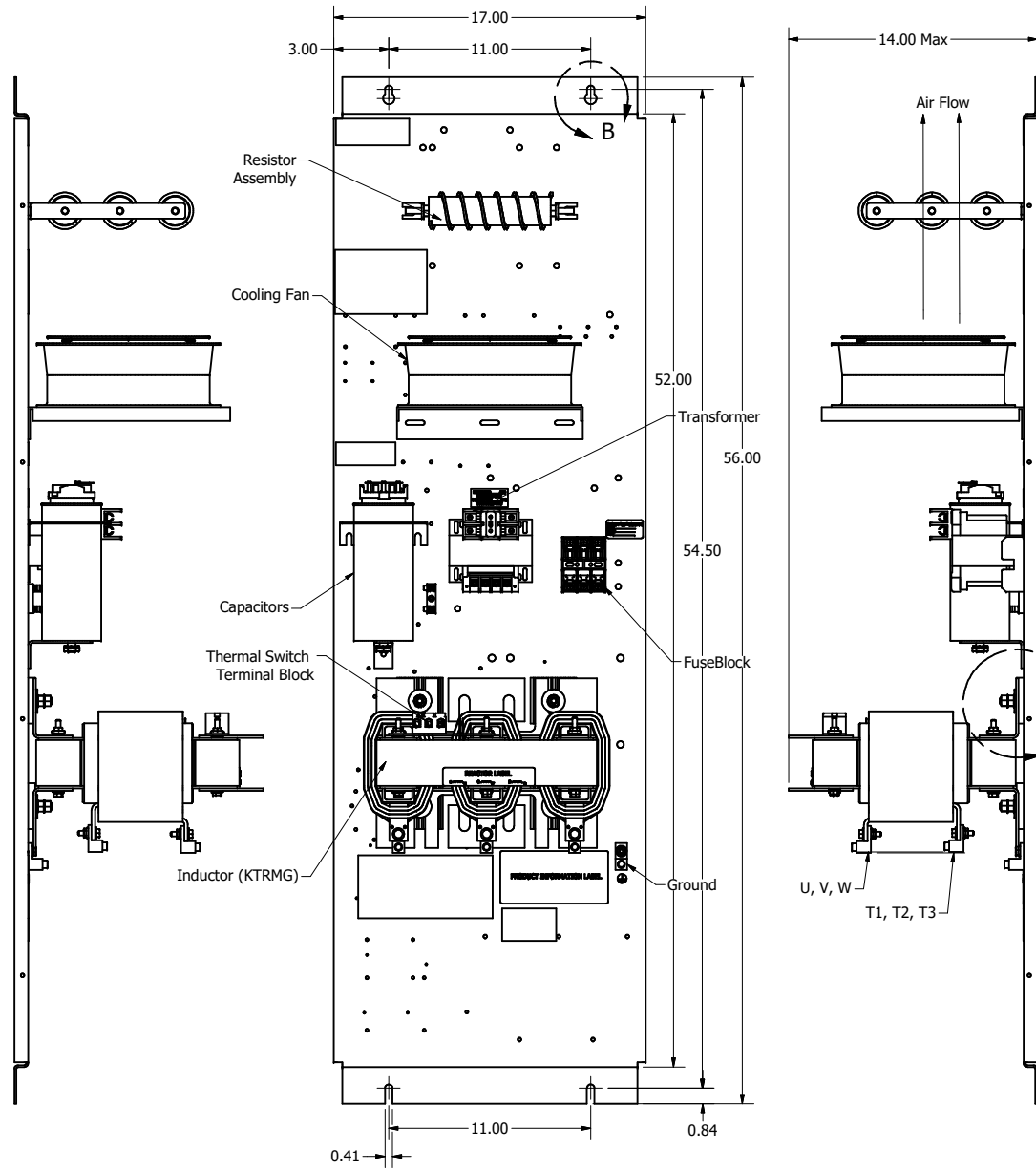
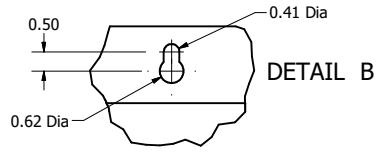


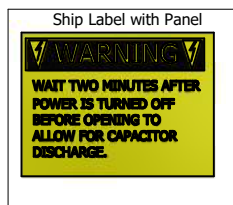
KMG110C00A  
 Approx Weight: 224LBS.

For Schematic See  
 Drawing# 24281-23A




Customer Connections  
 L1, L2, L3, U, V, W  
 And Ground Lug.

Wire Size (AWG)	Torque ( LBS-IN)
2/0-3	50
4-6	45
8	40
10-14	35



Customer Is Responsible For Proper Cooling Of Component In Customers Assembly.  
 Customer Is Responsible For Installation to Meet All National And Local Electrical Codes.

Material(s) Shall be RoHS Compliant

TCI, LLC CLAIMS PROPRIETARY RIGHTS IN THE MATERIAL HEREIN DISCLOSED. IT IS SUPPLIED WITHOUT PREJUDICE TO ANY PATENT RIGHTS OF TCI AND MAY NOT BE REPRODUCED OR USED TO MANUFACTURE ANYTHING SHOWN THEREIN WITHOUT WRITTEN PERMISSION FROM TCI.				TOLERANCES (EXCEPT AS NOTED)		 W132 N10611 Grant Drive Germantown, WI 53022	
				DECIMAL		MotorGuard, 600V, 110A, 3 Phase Open, Sinewave Filter, UL Listed	
				.XX ± .25		DRN BY: DSW DATE: 10/12/2016 FILE: 104424DG	
				.XXX ± .10		SCALE: DRAWN: DATE: FILE:	
				FRACTIONAL		1/16	
				ANGULAR		± 1°	
C	Drawing updated to Inventor	3/20/2020	DSW				
NO	REVISION	DATE	BY				